



# The Glenallan Plus

## 4 BEDROOM HOME

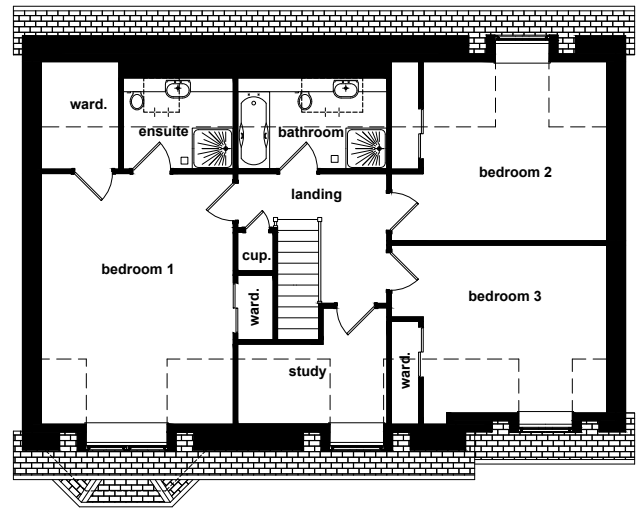
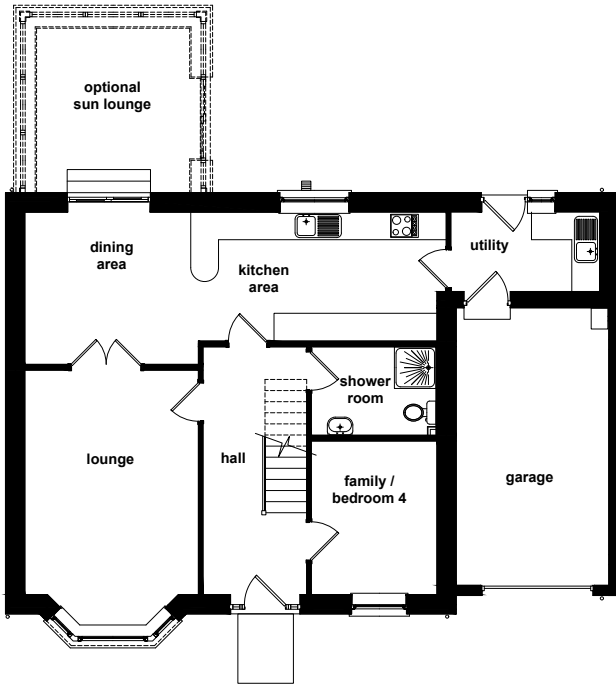
The Glenallan Plus is available as a detached home.

### FLOOR AREA

174sqm

- Large open-plan kitchen & dining room
- Large lounge with bay window
- Shower room on ground floor
- En-suite and walk-in wardrobe with Bedroom 1
- Built-in wardrobes in three bedrooms
- Large family bathroom with separate shower and bath
- Study
- Utility room
- Large enclosed garden
- Optional sun lounge
- Double driveway
- Integral garage

# The Glenallan Plus



## GROUND FLOOR

ROOM	METRIC	IMPERIAL
Lounge	4.85 x 3.74	15'10" x 12'3"
Kitchen/Dining	9.10 x 3.29	29'10" x 10'9"
Shower Room	2.69 x 1.91	8'9" x 6'3"
Utility	3.21 x 1.71	10'6" x 5'7"
Bedroom 4	3.31 x 2.71	10'10" x 8'10"
Single Garage	6.00 x 3.00	19'8" x 9'10"
Optional Sun Lounge	3.30 x 3.50	10'9" x 11'5"

## FIRST FLOOR

ROOM	METRIC	IMPERIAL
Bedroom 1	5.50 x 4.21	18'0" x 13'9"
En-suite Shower Room	2.41 x 2.00	7'10" x 6'6"
Walk in Wardrobe	2.35 x 1.71	7'8" x 5'7"
Bedroom 2	4.42 x 3.93	14'6" x 12'10"
Bedroom 3	4.42 x 3.93	14'6" x 12'10"
Study	3.27 x 2.55	10'8" x 8'4"
Bathroom	3.27 x 2.00	10'8" x 6'6"