

# The Strathallan

## 3 BEDROOM HOME

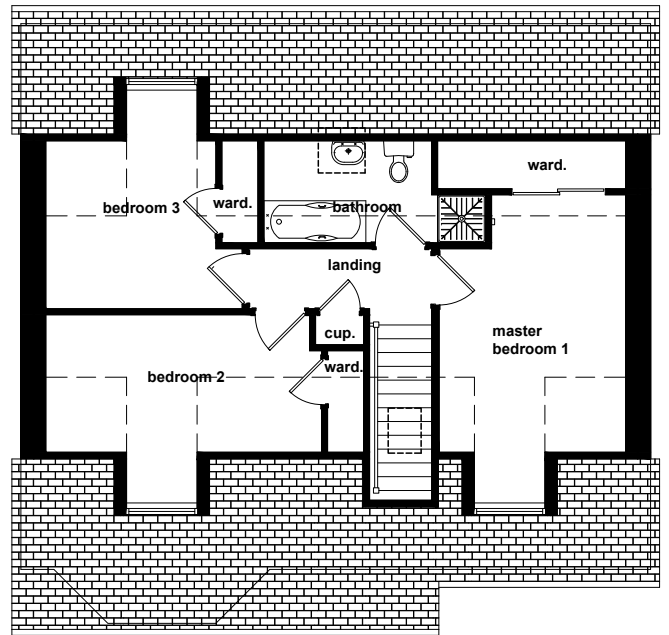
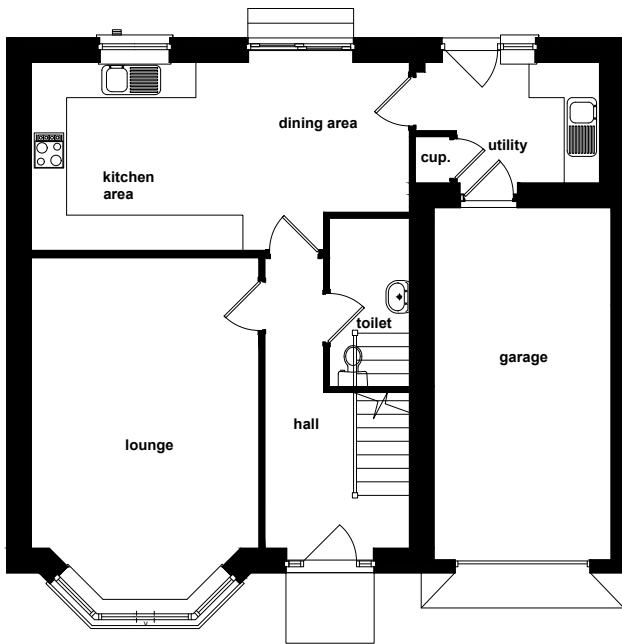
The Strathallan is available as a detached home.

### FLOOR AREA

112sqm

- Open-plan kitchen & dining room
- Large lounge with bay window
- Built-in wardrobes in all bedrooms
- Family bathroom
- WC on ground floor
- Utility room
- Large enclosed garden
- Optional sun lounge
- Driveway
- Integral garage

# The Strathallan



## GROUND FLOOR

ROOM	METRIC	IMPERIAL
Lounge	4.94 x 3.87	16'2" x 12'8"
Kitchen/Dining	6.43 x 3.20	21'1" x 10'5"
Toilet	2.86 x 1.36	9'4" x 4'5"
Utility	3.13 x 2.05	10'3" x 6'8"
Single Garage	6.00 x 3.02	19'8" x 9'10"
Optional Sun Lounge	3.30 x 3.50	10'9" x 11'5"

## FIRST FLOOR

ROOM	METRIC	IMPERIAL
Bedroom 1	4.29 x 3.11	14'0" x 10'2"
Bedroom 2	4.59 x 2.29	15'0" x 7'6"
Bedroom 3	2.95 x 2.90	9'8" x 9'6"
Bathroom	2.79 x 1.70	9'1" x 5'5"