



The Ash-hill - Double Garage

4 BEDROOM HOME

The Ash-hill - Double Garage is available as a detached home.

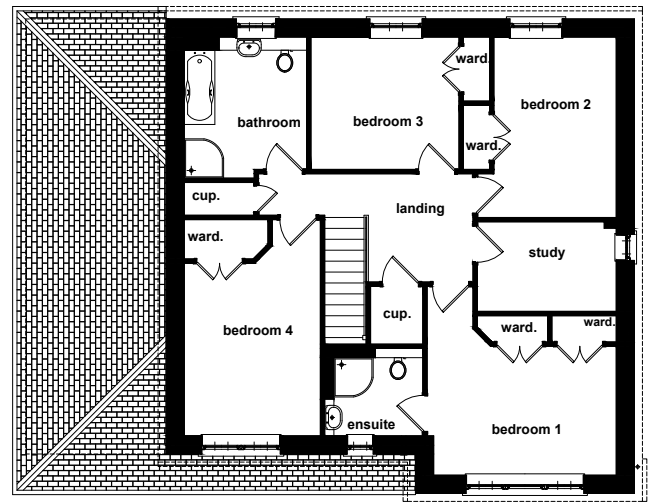
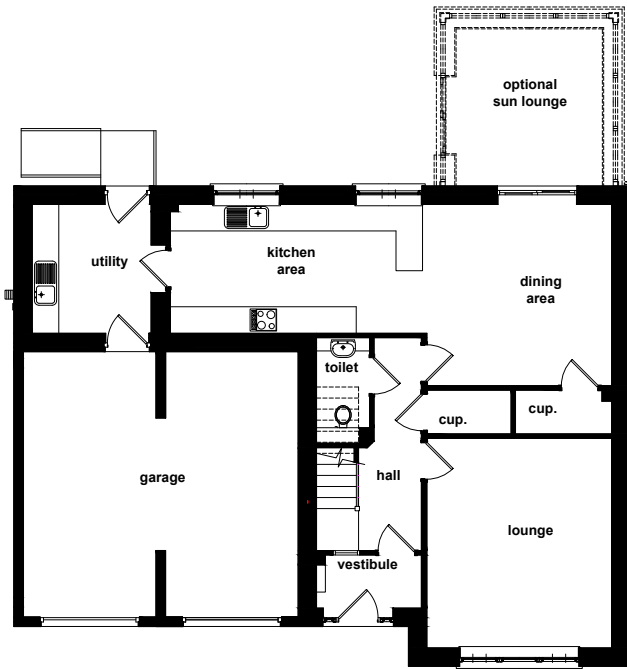
FLOOR AREA

174sqm

- Extra large open-plan kitchen & dining room
- Extensive pantry storage space
- Large lounge area
- En-suite with Bedroom 1
- Built-in wardrobes in all bedrooms
- Extra large family bathroom with separate shower and bath
- Utility room
- Study
- Large enclosed garden
- Optional sun lounge
- Double driveway
- Double Integral garage

** Please note the final specifications and finishes may vary.*

The Ash-hill - Double Garage



GROUND FLOOR

ROOM	METRIC	IMPERIAL
Lounge	4.73 x 4.17	15'6" x 13'8"
Kitchen/Dining	9.97 x 4.10	32'8" x 13'5"
Toilet	2.60 x 1.20	8'6" x 3'11"
Utility	2.90 x 2.68	9'6" x 8'9"
Double Garage	6.00 x 6.00	19'8" x 19'8"
Optional Sun Lounge	3.30 x 3.50	10'10" x 11'5"

FIRST FLOOR

ROOM	METRIC	IMPERIAL
Bedroom 1	4.32 x 2.95	13'8" x 9'8"
En-suite Shower Room	2.24 x 2.00	7'4" x 6'6"
Bedroom 2	4.12 x 2.80	13'6" x 9'2"
Bedroom 3	3.38 x 3.02	11'1" x 9'11"
Bedroom 4	3.95 x 3.11	12'11" x 10'2"
Study	3.17 x 2.05	10'5" x 6'8"
Bathroom	3.22 x 2.80	10'7" x 9'2"