



The Blairallan

4 BEDROOM HOME

The Blairallan is available as a detached home.

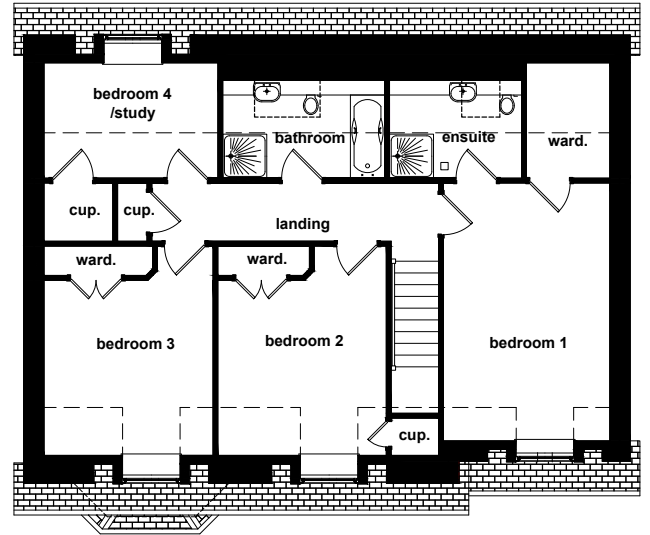
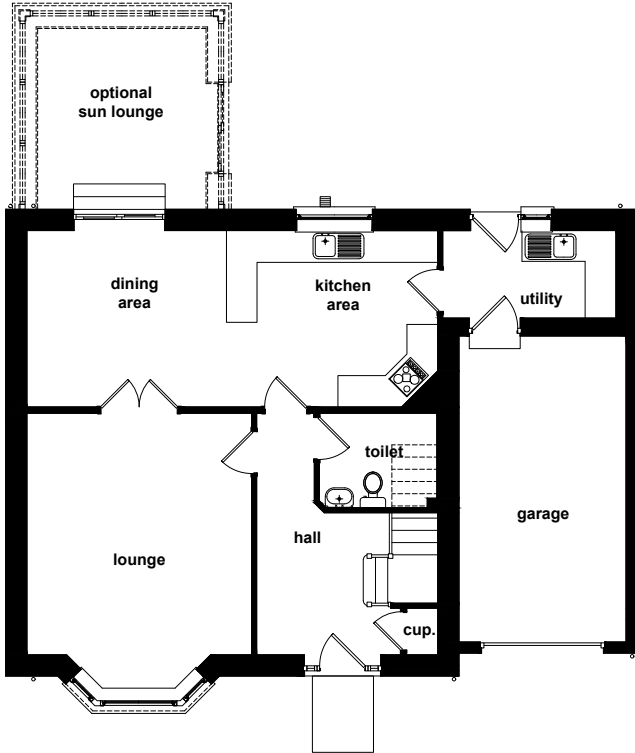
FLOOR AREA

160sqm

- Large open-plan kitchen & dining room
- Large lounge area with bay window
- En-suite with Bedroom 1
- Walk-in Wardrobe with Bedroom 1
- Built-in wardrobes in all bedrooms
- Large family bathroom with separate shower and bath
- WC on ground floor
- Utility room
- Large enclosed garden
- Optional sun lounge
- Driveway
- Integral garage

** Please note the final specifications and finishes may vary.*

The Blairallan



GROUND FLOOR

ROOM	METRIC	IMPERIAL
Lounge	4.74 x 4.41	15'5" x 14'4"
Kitchen/Dining	8.07 x 3.46	26'4" x 11'3"
Toilet	2.30 x 1.85	7'5" x 6'0"
Utility	3.40 x 1.71	11'1" x 5'6"
Single Garage	6.00 x 3.00	19'8" x 9'10"
Optional Sun Lounge	3.30 x 3.50	10'10" x 11'5"

FIRST FLOOR

ROOM	METRIC	IMPERIAL
Bedroom 1	5.27 x 3.40	17'2" x 11'1"
Walk in Wardrobe	2.35 x 1.70	7'7" x 5'5"
En-suite Shower Room	2.70 x 2.00	8'8" x 6'5"
Bedroom 2	4.29 x 3.44	14'0" x 11'2"
Bedroom 3	4.29 x 3.44	14'0" x 11'2"
Bathroom	3.31 x 2.00	10'8" x 6'5"
Bedroom 4/Study	3.56 x 2.35	11'6" x 7'7"