



# The Glenallan

## 4 BEDROOM HOME

The Glenallan is available as a detached home.

### FLOOR AREA

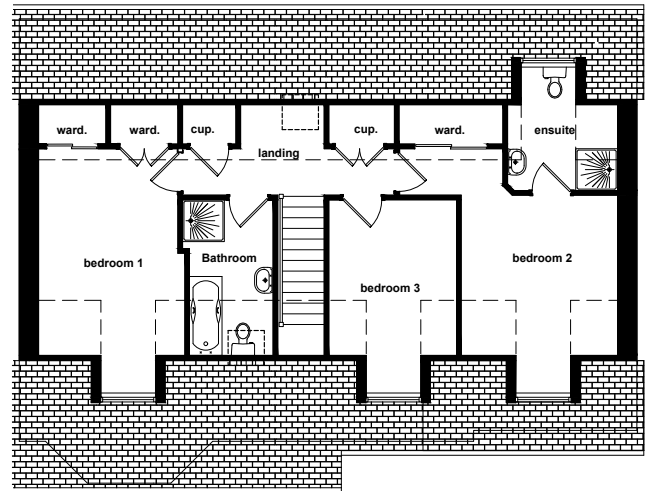
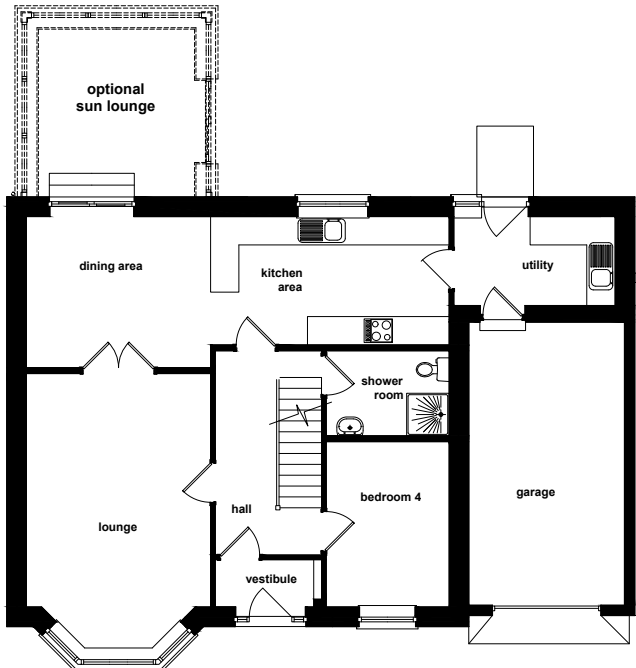
149sqm

- Large open-plan kitchen & dining room
- Large lounge with bay window
- Shower room on ground floor
- En-suite with Bedroom 2
- Built-in wardrobes in two bedrooms
- Large family bathroom with separate shower and bath
- Utility room
- Extensive storage space on upper floor
- Large enclosed garden
- Optional sun lounge
- Double driveway
- Integral garage

*\* Please note the final specifications and finishes may vary.*

---

# The Glenallan



## GROUND FLOOR

ROOM	METRIC	IMPERIAL
Vestibule	2.25 x 1.00	7'4" x 3'3"
Lounge	4.94 x 3.90	16'2" x 12'9"
Kitchen/Dining	8.95 x 3.20	29'4" x 10'5"
Shower Room	2.60 x 1.80	8'6" x 5'10"
Utility	3.10 x 1.88	10'2" x 6'2"
Bedroom 4	3.50 x 2.60	11'5" x 8'6"
Single Garage	6.00 x 3.00	19'8" x 9'10"
Optional Sun Lounge	3.30 x 3.50	10'9" x 11'5"

## FIRST FLOOR

ROOM	METRIC	IMPERIAL
Bedroom 1	4.45 x 3.15	14'7" x 10'4"
Bathroom	3.35 x 1.80	10'11" x 5'10"
Bedroom 2	3.45 x 3.10	11'3" x 10'2"
En-suite Shower Room	2.36 x 1.84	7'8" x 6'0"
Bedroom 3	3.35 x 2.75	10'11" x 9'0"