



The Strathallan Plus

3 BEDROOM HOME

The Strathallan Plus is available as a detached home.

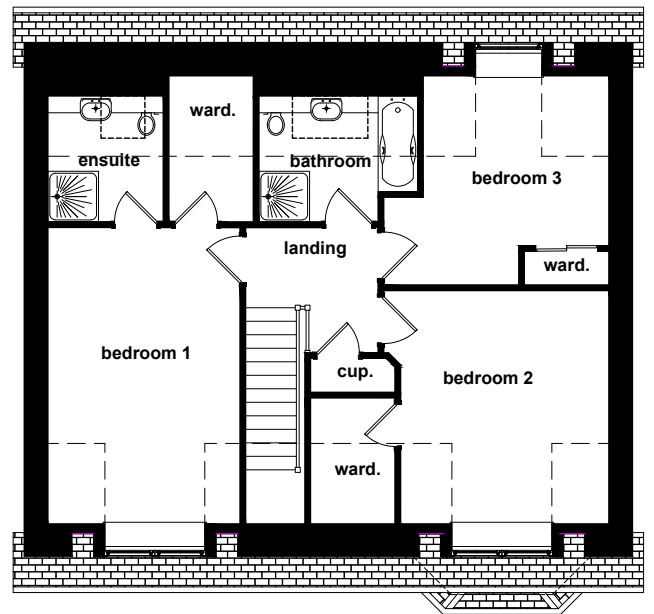
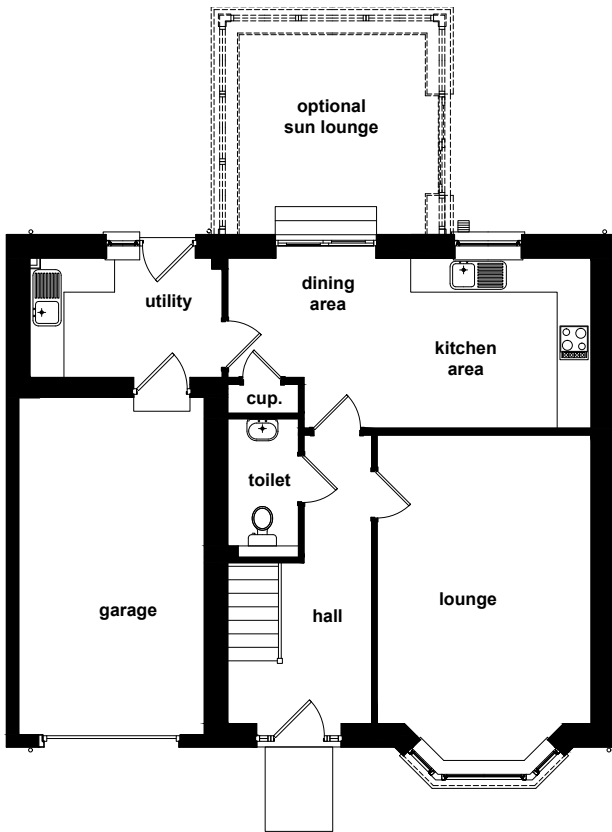
FLOOR AREA

137sqm

- Open-plan kitchen & dining room
- Large lounge with bay window
- En-suite with Bedroom 1
- Built-in wardrobes in all bedrooms
- Family bathroom with separate shower and bath
- WC on ground floor
- Utility room
- Large enclosed garden
- Optional sun lounge
- Driveway
- Integral garage

** Please note the final specifications and finishes may vary.*

The Strathallan Plus



GROUND FLOOR

ROOM	METRIC	IMPERIAL
Lounge	5.12 x 3.79	16'9" x 12'5"
Kitchen/Dining	6.45 x 3.01	21'1" x 9'10"
Toilet	2.45 x 1.25	8'0" x 4'1"
Utility	3.10 x 2.11	10'2" x 6'11"
Single Garage	6.00 x 3.00	19'8" x 9'10"
Optional Sun Lounge	3.30 x 3.50	10'9" x 11'5"

FIRST FLOOR

ROOM	METRIC	IMPERIAL
Bedroom 1	5.26 x 3.10	17'3" x 10'2"
En-suite Shower Room	2.33 x 2.05	7'7" x 6'8"
Walk in Wardrobe	2.59 x 1.50	8'5" x 4'11"
Bedroom 2	4.14 x 3.70	13'6" x 12'1"
Wardrobe	2.23 x 1.50	7'3" x 4'11"
Bedroom 3	4.00 x 3.71	13'1" x 12'2"
Bathroom	2.81 x 2.23	9'2" x 7'3"