

The Glover

5 BEDROOM DETACHED HOME WITH DOUBLE GARAGE
Floor Area: 241 sqm

the
treetops



Malcolm Allan
Housebuilders Ltd

The Glover



5 BEDROOM DETACHED HOME WITH DOUBLE GARAGE

Floor Area: 241 sqm

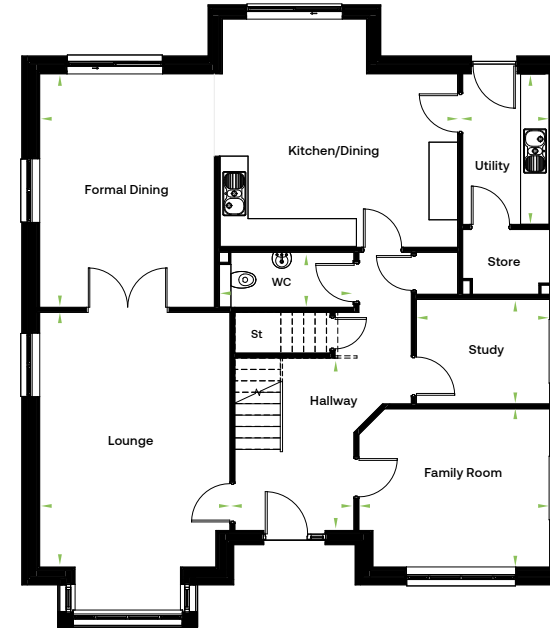
GROUND FLOOR

	METRES	FEET
Kitchen / Dining Room & Formal Dining Area	9.15 x 5.10	30'0" x 16'9"
Lounge	4.16 x 5.57	13'8" x 18'3"
Utility	1.89 x 3.29	6'2" x 10'10"
WC	2.94 x 1.20	9'8" x 3'11"
Hallway	2.60 x 3.77	8'6" x 12'5"
Study	2.90 x 2.28	9'6" x 7'6"
Family Room	4.16 x 3.45	13'8" x 11'4"
Double Garage	6.18 x 6.18	20'3" x 20'3"

FIRST FLOOR

	METRES	FEET
Master Bedroom	2.95 x 4.95	9'8" x 16'3"
En-Suite	2.95 x 1.81	9'8" x 6'0"
Wardrobe 1	2.45 x 3.63	8'1" x 11'11"
Bedroom 2	3.85 x 3.16	12'8" x 10'4"
Wardrobe 2	1.55 x 1.60	5'1" x 5'3"
En-Suite	2.85 x 1.51	9'4" x 5'0"
Bedroom 3	4.10 x 3.79	13'6" x 12'5"
Bedroom 4	4.04 x 3.79	13'3" x 12'5"
Bedroom 5	2.77 x 3.79	9'1" x 12'5"
Bathroom	2.85 x 2.10	9'5" x 6'11"

Ground Floor



First Floor

