



Plot 30 (Type G)

4 BEDROOM HOME WITH LARGE GARAGE

Floor Area: 203 sqm

GROUND FLOOR

	METRES	FEET
Kitchen	4.42 x 3.91	14'6" x 12'10"
Informal Dining Room	3.32 x 2.13	10'11" x 7'0"
Dining Room	3.31 x 3.91	10'10" x 12'10"
Lounge	3.11 x 5.97	10'3" x 19'7"
WC	1.13 x 2.18	3'8" x 7'2"
Utility	3.32 x 1.68	10'11" x 5'6"
Garage	5.44 x 5.89	17'10" x 19'4"

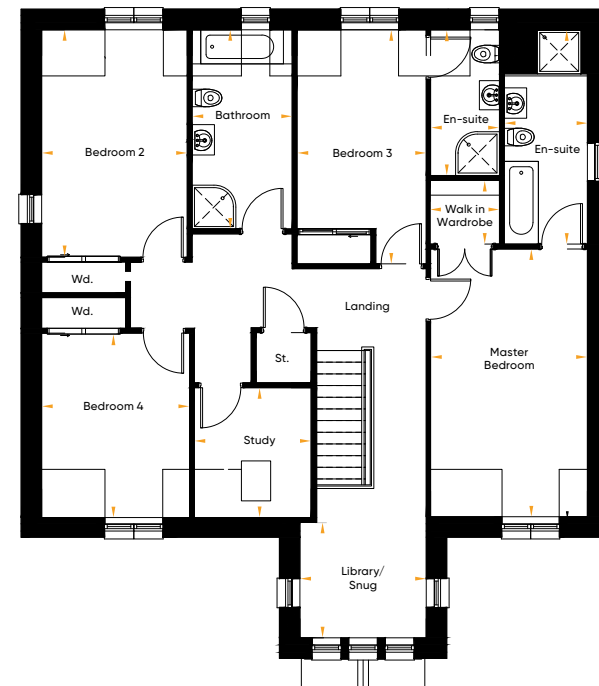
FIRST FLOOR

	METRES	FEET
Master Bedroom	3.23 x 5.50	10'7" x 18'1"
Walk-in Wardrobe	1.43 x 1.31	4'8" x 4'4"
En-suite Bathroom	1.71 x 4.40	5'7" x 14'5"
Bedroom 2	2.99 x 4.68	9'10" x 15'4"
Bedroom 3	2.66 x 4.81	8'9" x 15'9"
En-suite Shower Room	1.42 x 3.00	4'8" x 9'10"
Bedroom 4	3.04 x 3.79	10'0" x 12'5"
Study	2.40 x 2.67	7'10" x 8'9"
Library/Snug	2.60 x 2.37	8'6" x 7'9"
Bathroom	2.06 x 4.09	6'9" x 13'5"

Ground Floor



First Floor





Malcolm Allan
Housebuilders Ltd